



LYNFIELD  
COLLEGE

# NEWSLINK

NEWSLETTER 1 | 16 FEBRUARY 2023

## *From Principal Cath Knell*

*He aha te mea nui o te ao*

*He tangata, he tangata, he tangata*

*What is the most important thing in the world?*

*It is the people, it is the people, it is the people,*

### *Kia ora koutou*

After the delayed start to the school year resulting from the Auckland floods, the sun shone brightly for the pōwhiri for our Year 9 students on Tuesday 7 February. They were welcomed with the school haka performed with passion and pride by our senior leaders. It was lovely to see so many whānau attending and to have the opportunity to chat afterwards over a cup of tea in the staffroom. The students have settled into the routines of secondary school extremely well. Thanks go to our Peer Support leaders and Hui mai teachers for demonstrating our school value of whanaungatanga tika - we are caring, as they supported them through their Orientation programme.

We were able to spend two purposeful days on full timetable before having to shift to online learning for Monday 13 and Tuesday 14 February during the Cyclone. However we were ready to go with learning being posted for each class on Schoology. Student attendance at the online Hui mai sessions was excellent.

Our concerns that a number of our students would face challenges in returning to onsite learning proved unfounded as we welcomed back 86% of our students on Wednesday.

We now look forward to returning to the scheduled programme of events for Term 1.

To those who were personally or who have had family or friends affected by the recent weather events, our thoughts are with you.

Noho haumarū - stay safe and well

Cath Knell

**Tumuaki | Principal**

## IN THIS ISSUE

- First Weeks Back
- Year 9 Orientation
- 9WIS Peer Support Activities
- Welcome to New Staff
- Student Leadership Training
- NCEA Results 2022
- Scholarship Results 2022
- Wellbeing Survey 2023
- Lynfield BYOD 2023
- Uniform and Stationery Shop
- Music Tutors for Instrument Lessons
- Student Success
- Careers News
- Sports Scene
- Phone Away Before You Enter the Classroom



*Welcome  
Back!*

---

## *First Week Back*

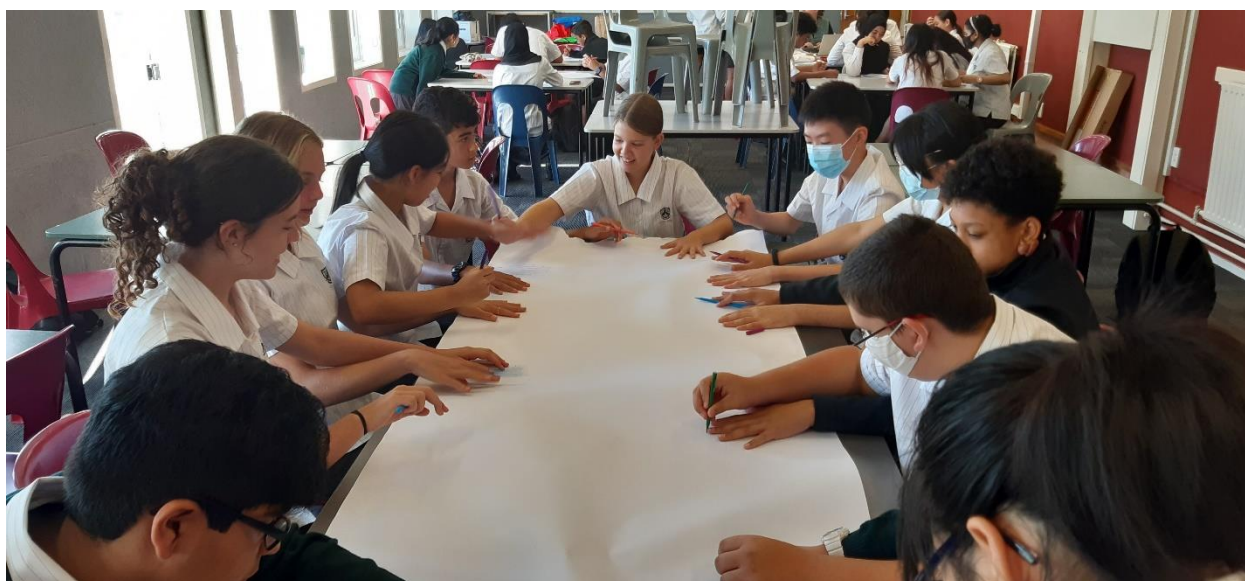
***Year 9 Students are welcomed with a Pōwhiri.***



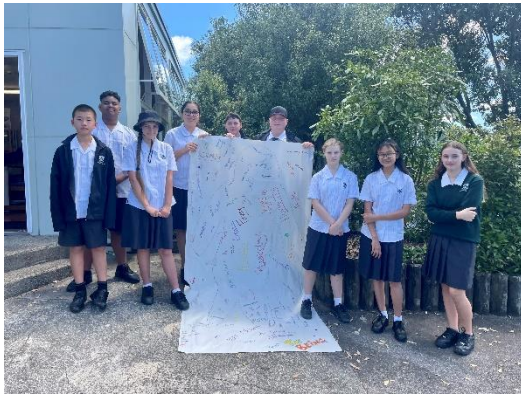
---

## *Year 9 Orientation*

Our Year 9 students spent two days this week familiarising themselves with the school and each other as part of the Orientation Programme. Activities included getting to know you games with Peer Support leaders, understanding the timetable, and learning about school rules and processes. Year 9 Hui mai teachers have commented that the students are very friendly and willing to give things a go which is a great attitude to start high school with!







**Above: 9WIS Peer Support Activities.**

**Below: Pounamu and Pacific Hui mai classes learning Whakarongo Mai ra. These Hui mai classes will devote one combined session each fortnight to developing whanaungatanga tika and Pacific Pride and Young Māori Leaders.**



## ***Mihi Whakatau for New Staff***



---

## ***Welcome to our New Staff***

***We are delighted to have the following new staff at the College and look forward to introducing them over the next few issues of Newslink.***

Joshua Rennard, Language and Languages  
Melanie Williams-Taylor, Language and Languages  
Jeremy Downing, Language and Languages  
Mary Mostellar, Language and Languages  
Luke Jacobs, Language and Languages  
Asma Shahid, Technology  
Min Milosavljevic, Technology  
Imogen McQueen, Technology  
Danielle Norman, Faculty Leader, Humanities and Commerce  
Tony Kang, Humanities and Commerce  
Mitch Cranch, Humanities and Commerce  
Adrian McCormack, Humanities and Commerce  
Miranda Lovis, Health and PE  
Camryn Ison, Health and PE  
Jamie Skelton, Mathematics and Statistics  
Romola Naidoo, Mathematics and Statistics  
Naziah Dean, Science  
Joanne Boyce, Learning Support  
Jefferson Grey, Learning Support  
Archana Vasudeva, Learning Support  
JD Douglas, Learning Support  
Sue Sokolich, Learning Support  
Joanne Morgan, Administration Reception  
Karen Grant, Administration Attendance

### ***Welcome back to the following returning staff.***

Alannah Morris, Counsellor, Student Services  
Maggy Beck, Language and Languages  
Sherry Wagner, Language and Languages  
Bonny Proctor, Language and Languages, Te Reo Māori and Kaiāwhina  
Sue Green, Technology  
Chris James, Health and PE

---

## ***Student Leadership Training***

Ehara tāku toa i te toa takitahi, engari he toa takitini

(My strength is not as an individual, but as a collective)

Kia ora koutou

To kick off the anticipated school year of 2023, a student leadership training was held across two days. Over this time, each profile group was able to showcase what they have to bring to the team - an activity which is related to their profile group name for e.g. Arts and Cultural Captains implemented a quiz game based on popular culture. We bonded over similar interests and really got to know each other while playing team building games and setting goals within our portfolios for the year. It was great to have the Young Māori and Pacific Pride leaders join us and it was a really thrilling and enjoyable time for all, especially after such a long summer break.

We are extremely honoured and proud to be serving as Head Students of Lynfield College. We can't wait to collaborate and work alongside an amazing and passionate team this year and we look forward to what our future holds for 2023. Our viewpoint as Head students is to help direct our fellow brothers and sisters to a positive pathway by encouraging students to "Seize the moment" given opportunities and trying their very best in everything they do. Already we have had to face many challenges and complications, but it did not stop our commitment. The executive team were able to keep in contact over the extra days off school and perform an outstanding Haka for the new staff and Year 9s. Everyone



performed it with soul and mana. As Head students we are very proud and believe that this is a testament of how strong and solid our foundation will be as student executives of 2023.

Tena koutou, tena koutou, tena koutou katoa!



*Sitaita Latuila*  
Head Student



*Han Xie*  
Head Student



*Tom Tuipulotu*  
Deputy Head Student



*Francesca Walsh*  
Deputy Head Student

## Student Action

### VALENTINES DAY

On Friday 17 and Monday 20 February, let's acknowledge others with cards, chocolates, photo booths. Be kind and say thank you!

### COMMUNITY SUPPORT

No doubt many of our students and their families have been impacted by the recent flooding events. As student leaders we acknowledge our responsibility to assist our students and their families where we can. There are many members in the Lynfield community who need our help. As a collective that can be mobilised to assist in the recovery of our community, we can make a difference!

If you have any non perishable goods that you could donate please bring them to school any day next week and place them in the boxes outside the Hall and in the Quad. Your support is a massive help! Thank you!



---

## NCEA Results 2022

The ongoing impact of Covid continued to be reflected in our NCEA results this year, particularly for our Year 13 students who had experienced 3 years of disruption to their learning. Despite this challenge, many of our students did succeed in gaining their NCEA Certificates and we are proud of their resilience and the effort they put into their learning.

### ***In summary:***

Year 11: 71.5% gained L1 certificate. Of these 23.5% had their level certificate endorsed with Excellence and 33.6% endorsed with Merit.

Year 12: 71.2% gained L2 certificate. Of these 15.9% had their level certificate endorsed with Excellence and 27.6% endorsed with Merit.

Year 13: 62.3% gained L3 certificate and 49.7% gained UE. Of those receiving their L3 certificate 16.6% were endorsed with Excellence and 33.7% at Merit.

Note: These are interim results and may vary slightly before finalised in March by NZQA.

### **REVIEW AND RECONSIDERATION OF EXAM PAPERS**

A reminder, that the last day for a review and reconsideration of exam papers is Friday 3 March. See the following link for information and the application process. We advise students to show their teacher the exam scripts before applying. Exam papers were returned to candidates digitally at the end of January.

<https://www.nzqa.govt.nz/ncea/ncea-results/reviews-and-reconsiderations/>

---

## Scholarship Results 2022

The number of students who were entered or chose to sit Scholarship exams in 2022 was once again impacted by Covid. However, 15 Scholarships were awarded to 10 Lynfield College students across 9 subject areas for 2022. This included 1 Outstanding Scholarship (Statistics). Students who gained Scholarship were:

***Simeon Raymond*** in English

***Shaan Manilal*** in Biology, Statistics, Economics

***Daniel Chen*** in Chemistry, Physics

***Yanyu Huang*** in Chemistry, Calculus, Statistics (***Outstanding***)

***Aaron Mathai*** in Chemistry

***Zishen Wang*** in Chemistry

***Christopher Brown*** in Physics

***Haze Fleming*** in Statistics

***Alefiya Bagasrawala*** in Design

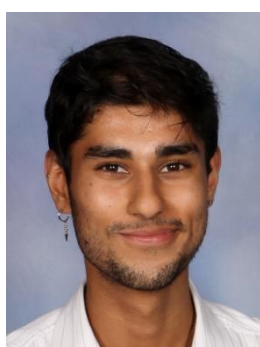
***Ava Shields*** in Classical Studies

Congratulations to all our Scholarship students and especially to Yanyu Huang, who gained an Outstanding Scholarship in Statistics.

Students who gained a scholarship are given a monetary award for their university study. The College is extremely proud of these students. They gained top academic awards despite the challenges they faced to their learning over the past 3 years. The school also recognises the work done by the teachers to prepare and tutor these high achievers.



*Simeon Raymond*



*Shaan Manilal*



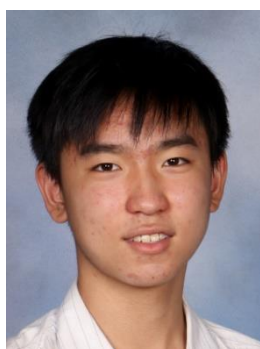
*Daniel Chen*



*Jason Yanyu Huang*



*Aaron Mathai*



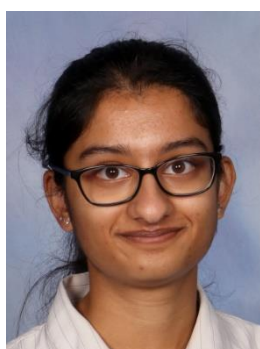
*Zishen Harbour Wang*



*Haze Fleming*



*Christopher Brown*



*Alefiya Bagasrawala*



*Ava Shields*

---

## ***Wellbeing Survey 2023***

As part of our continued efforts to support students' wellbeing we will be once again completing the "GoodSpace Schools Wellbeing Survey" across all our year levels. This survey takes a confidential look at a wide variety of aspects of wellbeing including: School Life, Self-care, Belonging, Home Life, Identity & Sexuality and Mental Health. We run this survey year level by year level starting with Year 13 students in week 4 (20<sup>th</sup> Feb) this term. Year 9 students will be offered this survey in week 6 (6 March). Students will be encouraged to complete this survey in their hui mai time. The generalised data is incredibly helpful for directing our attention and resources to things that are relevant for certain year levels and the school as a whole. It may also highlight individual students who may be struggling. These students will be offered the opportunity to meet with one of the counselling team for an individual, confidential counselling session.

If at any time you are concerned about your young person please reach out to our Head of Counselling, Catherine Hawke. [chawke@lynfield.school.nz](mailto:chawke@lynfield.school.nz) or your young person's dean.

---

## ***BYOD at Lynfield 2023***

Lynfield College is a Bring your Own Device (BYOD) school. Every student is required to have a suitable device for learning that they can bring to school every day. All of our courses at every level have an online component and devices are used by students on a daily basis to access learning activities and resources. It also provides us with the ability to switch from 'face-to-face learning' to 'learning from home' should the need arise.

There are a range of suitable devices available from a number of different retailers. The basic recommendations can be found on our website: <https://www.lynfield.school.nz/Curriculum/e-Learning.html>

If you are struggling financially to provide a device for your child(ren) we can arrange for them to loan a device from the school with a \$30 deposit for one device, \$50 for two and \$70 for three or more from the same immediate family. This will involve your child collecting an agreement form from Mr Winn or Mrs Wichman-Kelly to take home for parent/s to sign and return to the Account's office with the deposit. This is a refundable deposit should the device(s) be returned in full working order.

**The intention of this loan scheme is to support our families short term until a personal device can be purchased.**



***The school aims to support all students to have access to a device but we will only be able to loan devices where there is family hardship.*** That way we can use our limited resources to supply those students in genuine need. Should you like to discuss your individual situation please contact:

Deputy Principal Lisa Wichman-Kelly at 09 627 0600 extn 704  
Email: [lwichmankelly@lynfield.school.nz](mailto:lwichmankelly@lynfield.school.nz) or

Deputy Principal Richard Winn at 09 627 0600 extn 705  
Email: [rwinn@lynfield.school.nz](mailto:rwinn@lynfield.school.nz)

---

## Uniform and Stationery Shop

The Uniform and Stationery Shop is open to all students on site for their uniform and stationery needs during first and second interval Mondays to Thursdays, and on Fridays before school at 8am and first interval.

Parents can attend the shop at the following times:

Monday – Thursday: 10.00am – 12.00pm and 12.30pm – 1.30pm

Friday: 8.00am – 11.30am

Online ordering is available through our website <https://www.lynfield.school.nz/shop.html>. Payment can be made by direct credit or credit card and students onsite are able to collect the items from the Shop during the above times.

Stationery packs are available in the shop and online for year 9 students. Stationery lists for all other year levels can be found on our website <https://www.lynfield.school.nz/site/lynfieldcollege/files/Stationery-Lists-2022.pdf> and all stationery items on the lists are available for purchase at the Uniform and Stationery shop.

For any further queries please email Alys Higgs at [uniformshop@lynfield.school.nz](mailto:uniformshop@lynfield.school.nz)

## Music tutors for instrument lessons



**Michael Howell**  
*Guitar*



**Charlie Isdale**  
*Saxophone/Violin*  
*Big Band*  
*Jazz Combo*



**Sigmund Sue**  
*Piano/Voice*  
*Chamber Orchestra*  
*Choir*



**Andrew Isdale**  
*Jazz Piano/Guitar/Sax*  
*Jazz Combo*



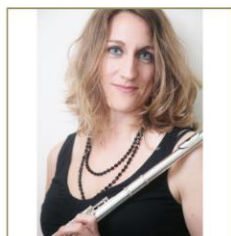
**Donald Nicholls**  
*Clarinet/Saxophone*  
*Chamber Trio*



**Tom Broome**  
*Drums*



**David Hodkinson**  
*Bass Guitar*



**Lorna Wright**  
*Flute*  
*Chamber Trio*



**Kathleen Tomacruz**  
*Cello/Guitar*  
*Development Strings*  
*Jazz Combo*



**Matthew Verrill**  
*Trumpet/Trombone*  
*Concert Band*



---

## Student Success

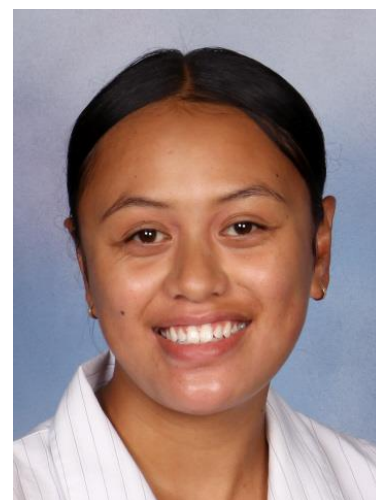
### GIFTED LEARNER AWARDS

*Two Lynfield College students have received Gifted Learner Awards from the Ministry of Education. Congratulations to Emma Wagner, Year 11 and Evan Huang, Year 12.*



### FUTURE LEADERS ACADEMY RANGATIRA MŌ ĀPŌPŌ

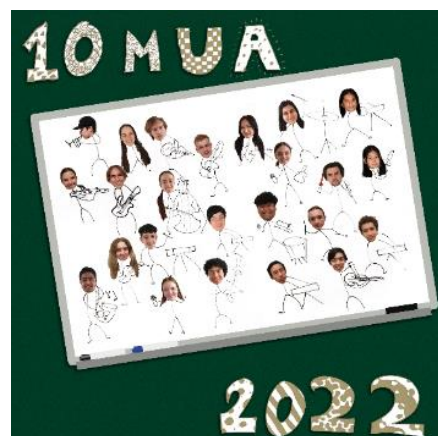
Congratulations to Cheyenne Tavioni who has been selected to participate in the Pacific Student Leaders Programme. She will be off to the Cook islands in April along with our other New Zealand and Australian student leaders! This course is run through the Future Leaders Academy whose vision is to strengthening the South West Pacific - by developing effective leaders. Through facilitating a community of connection, culture, experiential development, adventure, and leading by example. We wish Cheyenne all the best and look forward to hearing about it when she returns.



### 10MUA EP ALBUM

Last year the Year 10 Music Academy students recorded 4 song covers in the Music Department Recording Studio. We recently released these as an EP on streaming services and they can be heard by following [this link](#), or by searching for 10MUA 2022.

We hope you enjoy having a listen.



## Careers News

**WANTED:** The Gateway Programme is looking for parents who might be in the Finance and/or Architecture industries, who will be willing to host one or two students for one or two days at some stage this year. This work experience is a very useful tool in helping our young people to explore possible future careers. It allows students to talk to people in the industry, learn and observe from being in the workspace, have people to ask questions of, as they make decisions about subjects as well as future study options. We would love to hear from you. Please contact: Esther Harvey, Gateway Coordinator, Mb. 021 944 013 or Em. [eharvey@lynfield.school.nz](mailto:eharvey@lynfield.school.nz).

**Electrical industry Whanau Evening** Feb 26<sup>th</sup> 6-8pm:  
Interested in looking at a career in the **electrical industry** and keen to learn more? Students & whanau can register numbers to attend by emailing ETCO at [northernetco@etco.co.nz](mailto:northernetco@etco.co.nz)



Whanau evening.pdf



The poster for the ETCO Whānau Evening features a blue and green color scheme. At the top left is the ETCO logo with the tagline 'The electrical training experts'. The main title 'NAU MAI HAERE MAI' is written in large, bold, white letters. Below the title is an illustration of several electricians in orange and green uniforms working on various electrical tasks, including climbing ladders, using tools, and working on a control panel. A lightbulb is shown hanging from a cord. The text 'You are warmly invited to join us at the Whānau Evening. This is a chance to have a tour of our training centre with your whānau, and ask any questions from our knowledgeable team' is written in white. Below this, a light blue box contains the event details: Date: 23rd February 2023, Venue: 24a Allright Place, Mt Wellington, Time: 6pm - 8pm, and Rsvp: northernetco@etco.co.nz. At the bottom, there is a green banner with '0800 ASK ETCO' and the website 'www.etco.co.nz'. To the right of the banner are two circular logos: 'CELEBRATING 30 YEARS IN THE INDUSTRY' and 'MASTER ELECTRICIANS'.

**etco**  
The electrical training experts

# NAU MAI HAERE MAI

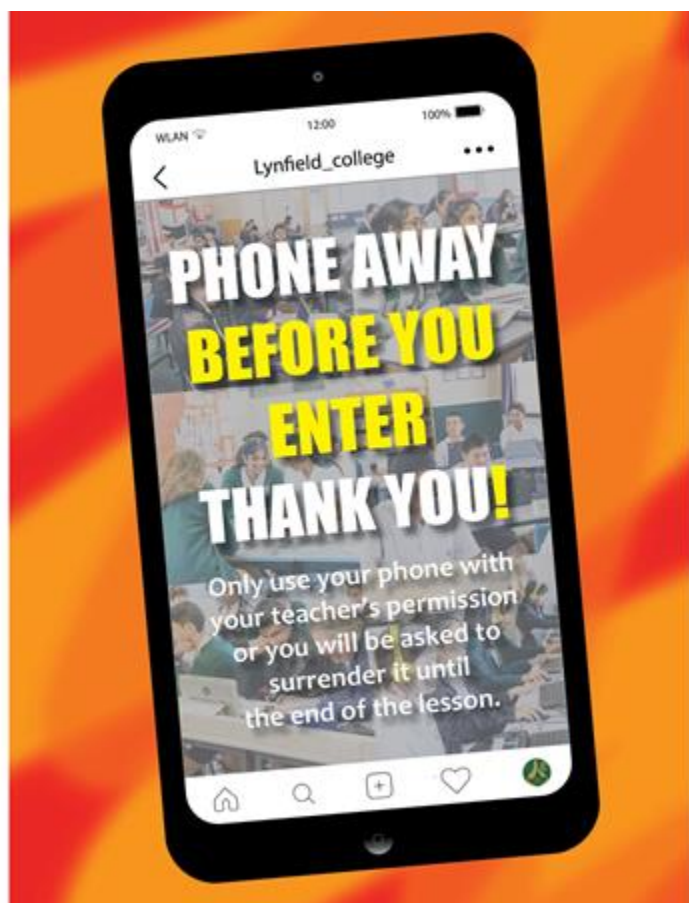
You are warmly invited to join us at the Whānau Evening. This is a chance to have a tour of our training centre with your whānau, and ask any questions from our knowledgeable team

**Date:** 23rd February 2023  
**Venue:** 24a Allright Place, Mt Wellington  
**Time:** 6pm - 8pm  
**Rsvp:** [northernetco@etco.co.nz](mailto:northernetco@etco.co.nz)

**0800 ASK ETCO**  
[www.etco.co.nz](http://www.etco.co.nz)

CELEBRATING 30 YEARS IN THE INDUSTRY

MASTER ELECTRICIANS





---

## *Sport Scene*

### **NZ SECONDARY SCHOOLS ATHLETICS CHAMPIONSHIPS SUCCESSES**

Three Lynfield athletes competed in this very prestigious event in December last year. All 3 came back with gold medals! No other school in NZ had a 100% success rate with gold medals. We are very pleased for these athletes who have worked so hard in their chosen events, and very proud too.

#### ***Congratulations to gold medal winners:***

**Mia Powell** (Y13, 2022) Senior Girls 400m

Mia set a NEW RECORD for this event, breaking a 33 year old record set in 1989 by Tania Hodgkinson!

**Percy Maka** (Y13, 2022) - Senior boys Discus

**Troy Maka** (Y10, 2022) Junior Boys Discus

### **HOUSE COMPETITIONS**

House Sports Day for the whole school will be Friday 24 February. Students will hear more about this in their first house meetings early next week.

#### ***Helping our students enjoy sport***

We are always appreciative of any help our school community is able to offer whether it is as a coach, manager, ref or umpire of a team. *If you have skills in any sport and can spare some time to work with our students in some way, please contact the Sports Office:*

Phone: 6270600 ext 595, Email: [sport@lynfield.school.nz](mailto:sport@lynfield.school.nz)

#### ***Getting Active***

We have a number of initiatives getting underway in the next 2 weeks. Most involve sessions at lunchtimes.

##### ***Badminton***

There will be lunchtime sessions beginning soon on Tuesdays and Fridays for anyone who is interested. This is completely separate from the badminton teams we will have in Term 2.

##### ***Basketball***

There will be a basketball programme beginning soon at least one lunchtime each week.

### **TEAM TALK**

#### ***Summer Sports***

After a very wet January we are pleased that our fields have drained well and we are looking forward to an uninterrupted sporting year. Weekly summer competitions begin with 1<sup>st</sup> XI boys cricket this weekend then volleyball, all other cricket, tennis and orienteering will start in the next two weeks.

Sign-ups for these sports are done at the Sports Office. It is essential that students watch Schoology frequently and thoroughly as all calls for sign-ups will be made using this messaging system.

Please remember, all team members are required to wear an appropriate sports uniform which the Sports Office will supply.

Team fees and the uniform bond can be paid online (either via the parent portal or direct credit), or by eftpos or in cash, with payments made at the Accounts Office.

#### ***Winter Sports***

***Musters and trials will begin during Weeks 5 and 6.*** All notices concerning sport are on Schoology. Students need to check the notices on Schoology at least twice/day so they don't miss out on being a part of something they will enjoy.

We need your help to manage, coach or transport one of our teams this year, in order to provide sporting opportunities to the large number of Lynfield students wanting to play sport. Remember, to manage a team you do not need knowledge of the sport, just to be a channel for communication between coach and players as needed and help organise (not necessarily provide) transport to games.

**We will not enter a team into a competition unless it has both a coach and a manager.**

If you or anyone you know is able to help us in any way we would really like to hear from you. There are plenty of openings available!! Please contact the Sports Office 627 0600 ext 595 or email Felicity Walbran (Sports Director) [sport@lynfield.school.nz](mailto:sport@lynfield.school.nz)